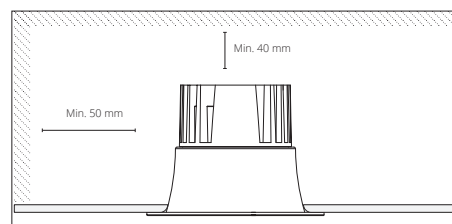
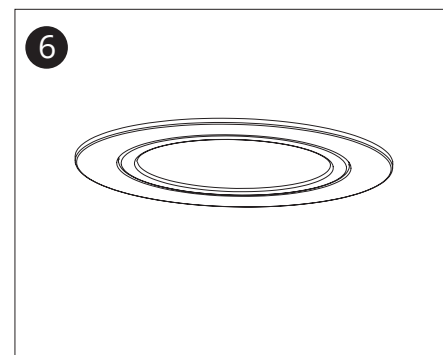
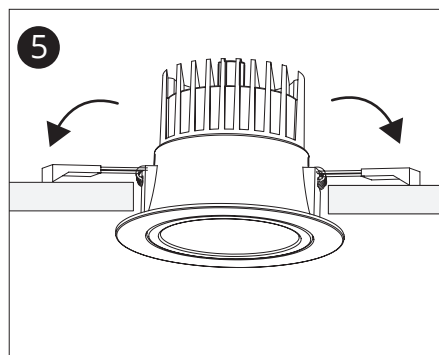
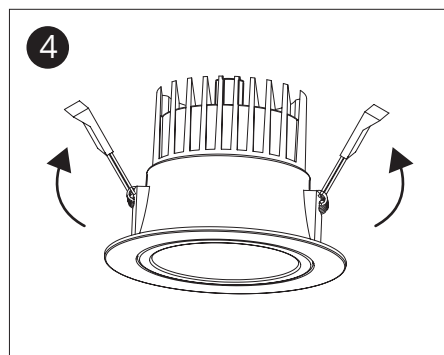
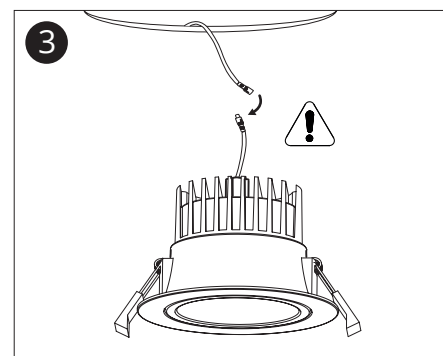
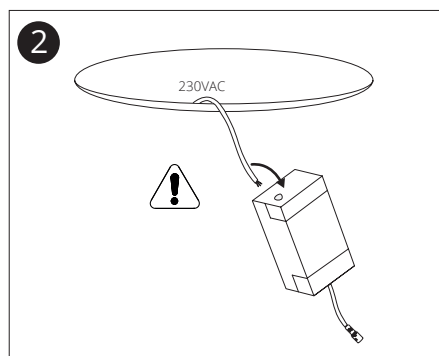
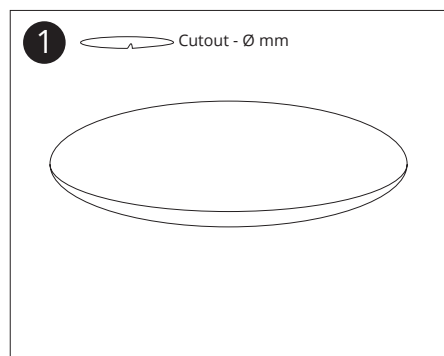
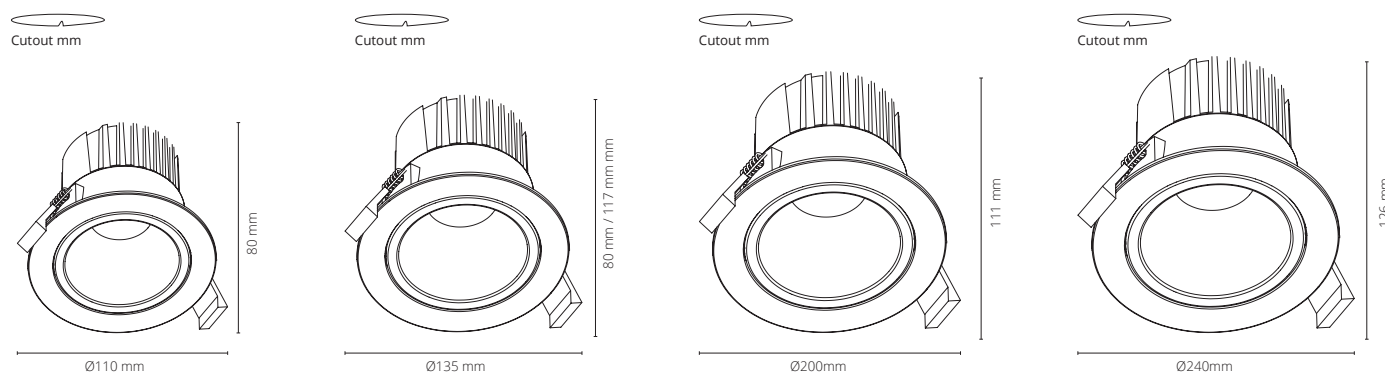


# T-Modular Downlight

## Monterings- og installationsvejledning / Mounting and installation instruction



**DK** Afdæk ikke armaturet og LED-driveren med termisk isoleringsmateriale og overhold minimumsafstand til væg og loft.

**GB** Do not cover the luminaire and the LED driver with thermal insulation material and observe the minimum distance to the wall and ceiling.

- DK**
1. Afbryd spændingen inden påbegyndt installation.
  2. Armaturet tilsluttes før spændingen tilsluttes igen.
  3. Er armaturet beskadiget må dette ikke installeres. Tilslut først spænding igen efter komplet installation.

- GB**
1. Disconnect the voltage before starting installation.
  2. The luminaire is connected before the voltage is reconnected.
  3. If the light source is damaged, it must not be installed. The luminaire MUST be connected before plugging in the mains voltage!

**DK** Lyskilden i dette armatur må kun udskiftes af Teamtronic eller af en tilsvarende kvalificeret fagperson. Hvis den ydre bøjelige ledning på armaturet bliver beskadiget, må denne kun udskiftes af Teamtronic eller af en tilsvarende kvalificeret fagperson.

**GB** The light source shall only be replaced by the manufacturer Teamtronic or its designated person. If the luminaire cable is damaged or if the luminaire is not working properly, it shall exclusively be replaced by the manufacturer or by the manufacturer designated person.